



*Let Things Better,
Faster and Vital*

Ethernet Connection and Setting

iDPRT Series

CONTENT

Introduction	1
1. AP Mode Setting	2
1.1 Utility Setting.....	2
1.2 Driver Setting	7
2. STA Mode Setting	15
2.1 Utility Setting.....	15
2.2 Driver Setting	21

Introduction

This manual shall not be changed without permission. Xiamen Hanin Electronic Technology Co., Ltd. reserves the rights to change the product in terms of technology, parts, software and hardware. If you need more information about the product, you can contact us. No section of this manual may be reproduced or transmitted in any form or by any means with the written permission of the company.

There are four Ethernet connection modes between printer and computer as follows:

- AP Mode—Utility Setting
- AP Mode—Driver Setting
- STA Mode-- Utility Setting
- STA Mode—Driver Setting

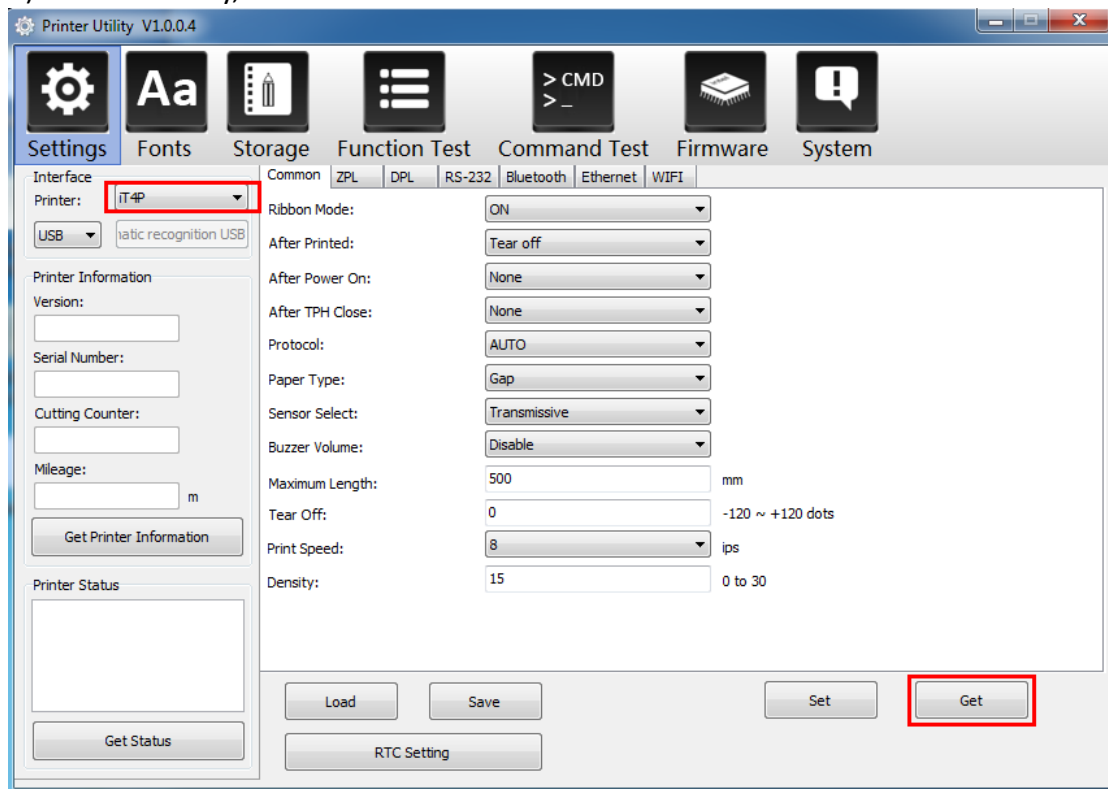
1. AP Mode Setting

Note:

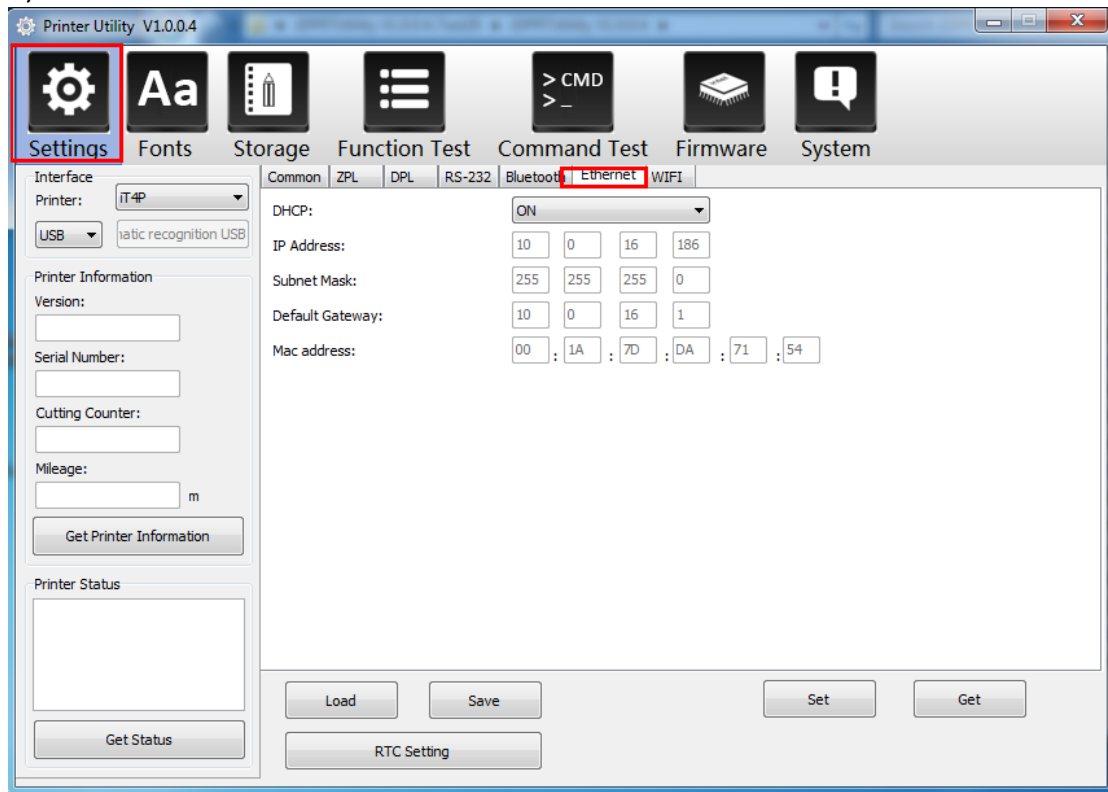
- 1) When setting Ethernet, make sure that the printer and PC are connected to the same router (printer and PC are in the same network segment).
- 2) For the following operations, take IT4P as an example, and the operation interface will vary according to the system.
- 3) Make sure the printer has been connected to the PC.
- 4) The same network segment refers to the first three digits are same; the last value is not the same. And the value change range is "1~255".

1.1 Utility Setting

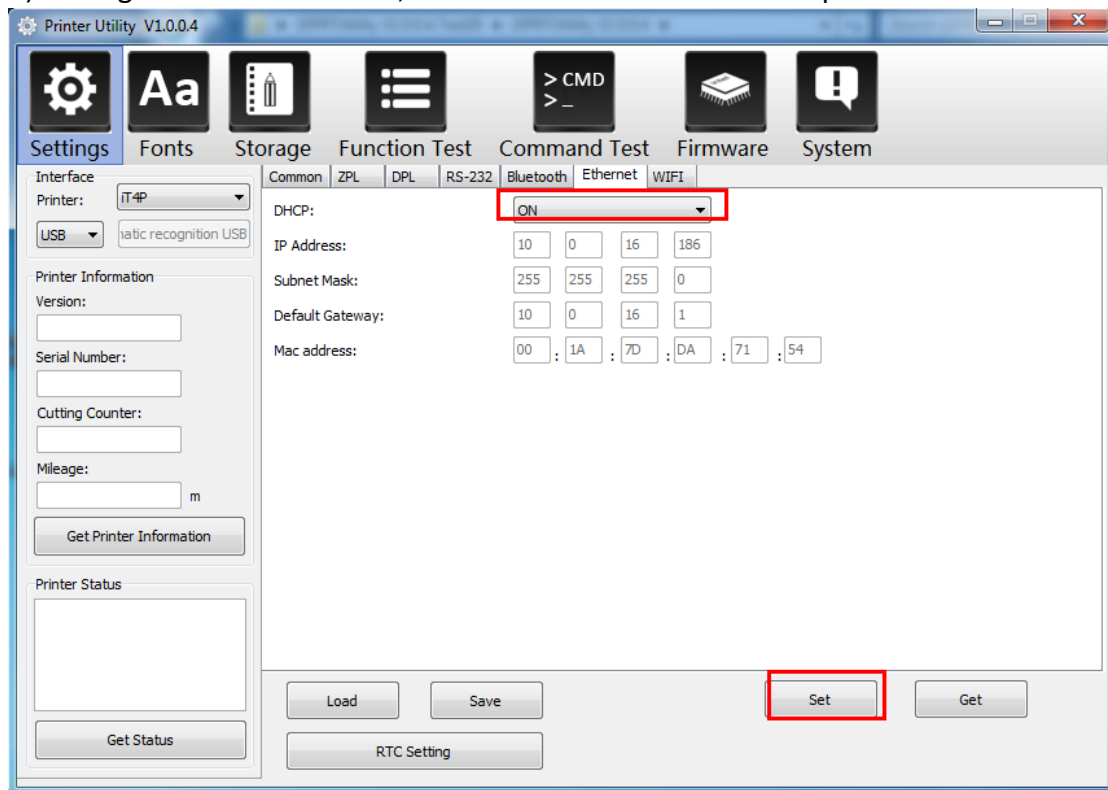
- 1) Click the utility, and click the "Get".



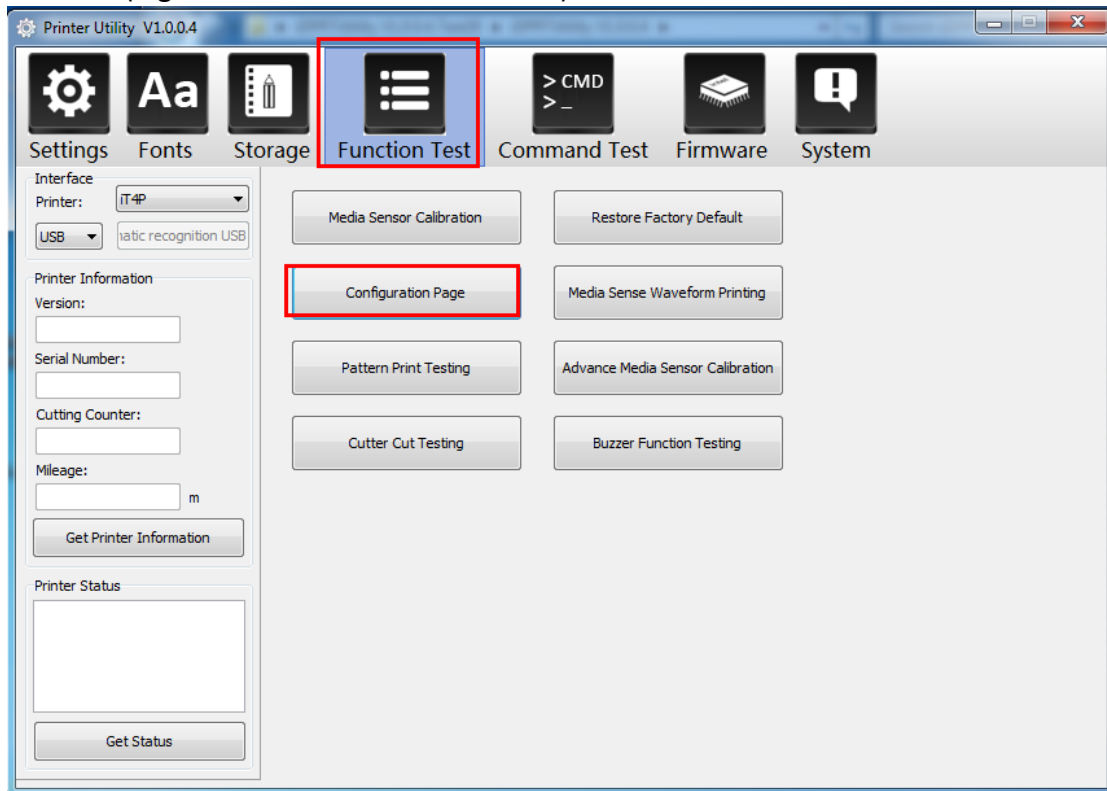
2) Choose the “Ethernet”.



3) Setting the “DHCP” to “ON”, then click “Set” and restart the printer.



4) Choose the “Function Test” and click the “Configuration Page”, you can get the IP address. (E.g. the IP address is 10.0.16.186)

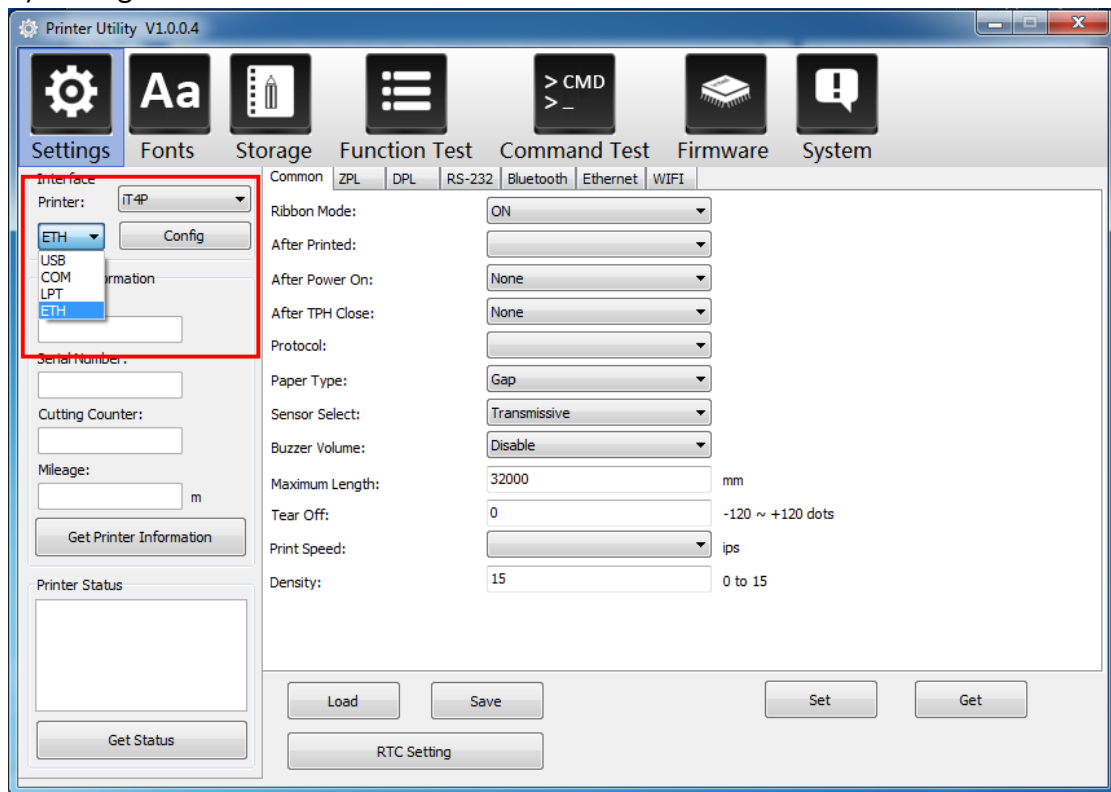


For example, from the following configuration page information can know that the printer IP address is: 10.0.16.186

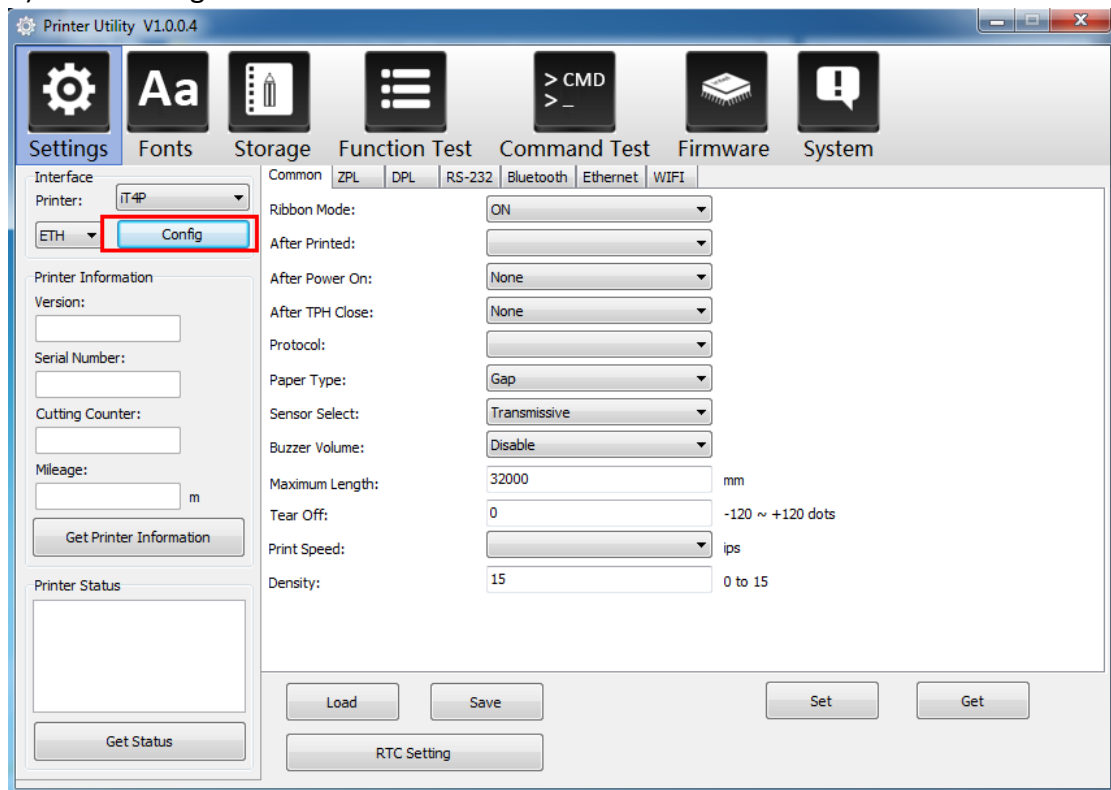
SELF-TEST

Brand:	iDPRT
MODEL:	IT4P
FW Version:	SV1 .00. 05
CG Version:	SV1 .00. 11
Serial Num	XXXXX
Interface:	USB & Serial & Ethernet
Serial 9100, None,8,1,DTR/DSR	
IP Adress:	10.0.16.186
SubnetMask	255.255.255.0
Gateway:	10.0.16.1
MAC Address	80: 1F: 12:99: B0: 03
DHC	Disable

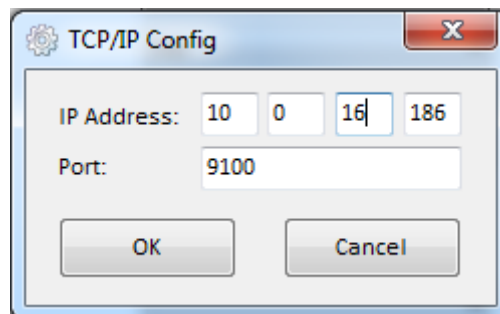
5) Setting the communication interface to “ETH”.



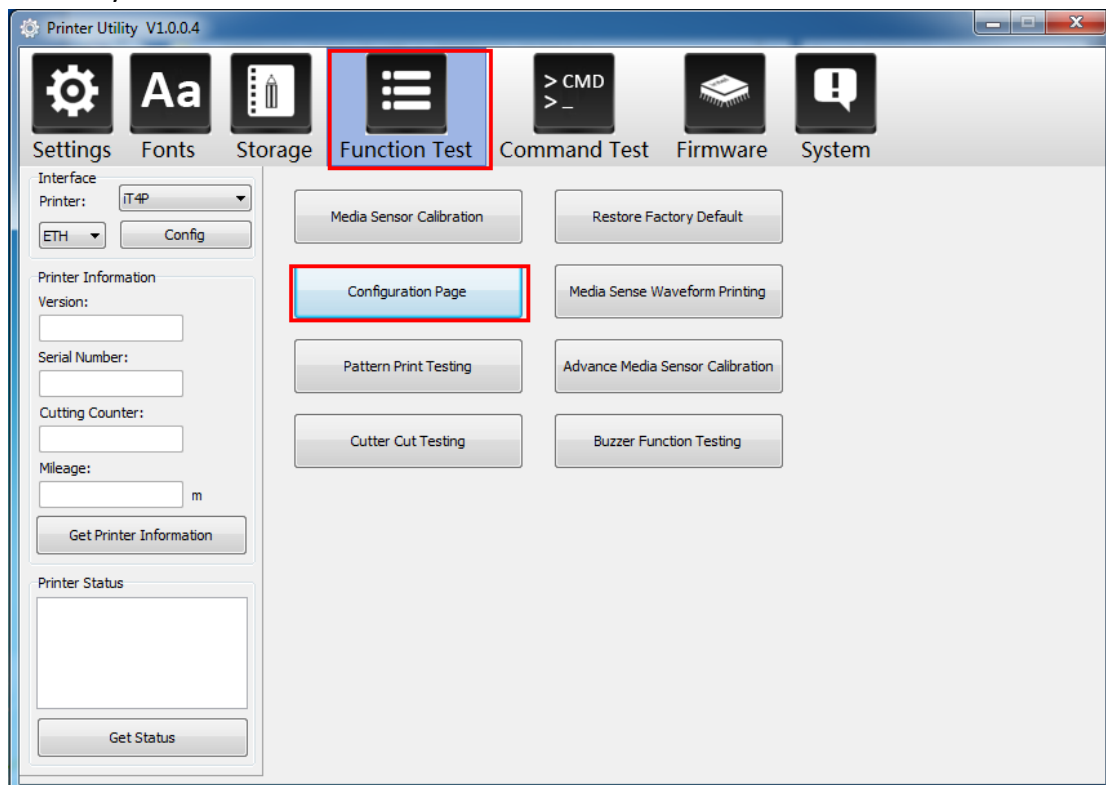
6) Click “Config”.



- 7) Set the IP address as the IP address of the configuration page, and then click "OK".
(E.g. the IP address is 10.0.16.186)

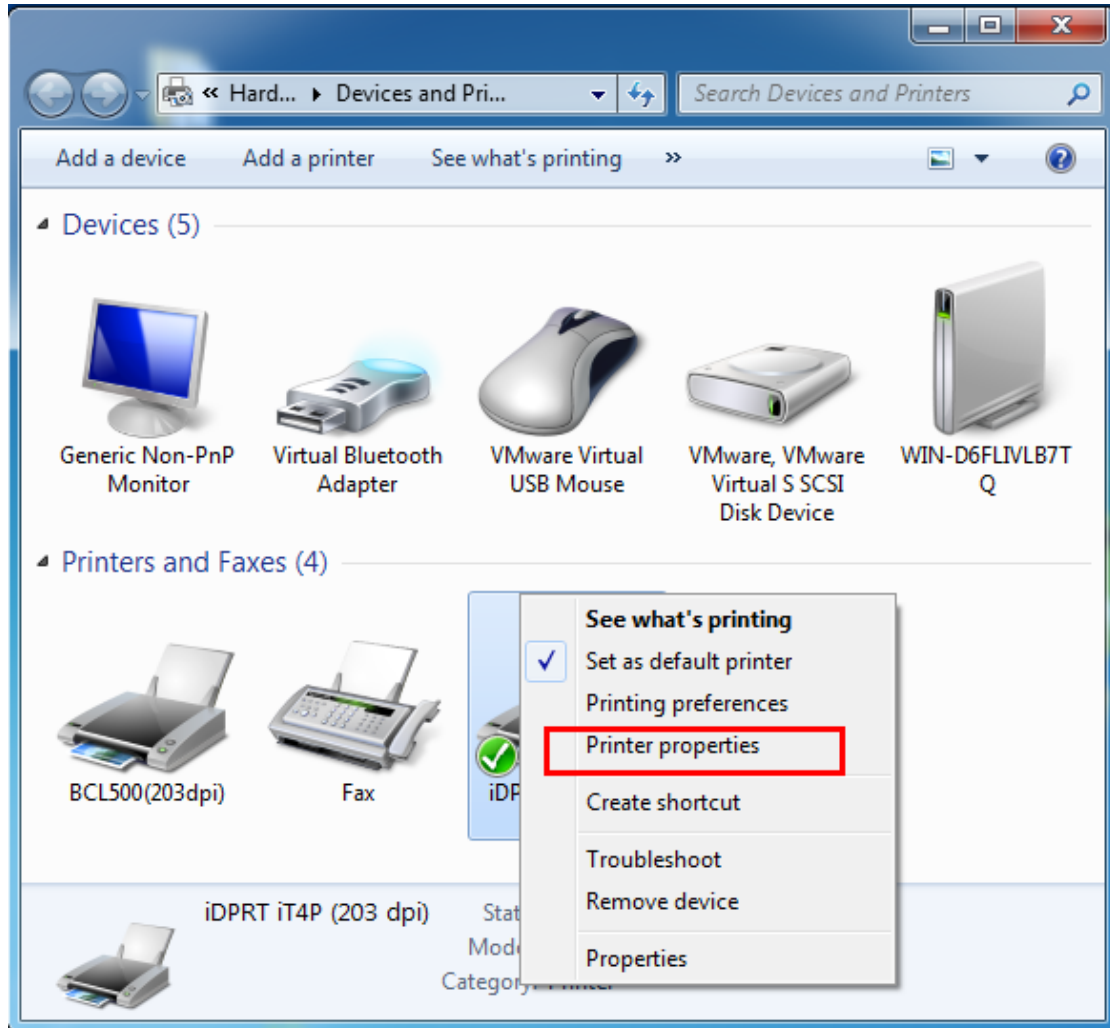


- 8) Select "Configuration Page" setting again to check whether label can be printed normally.

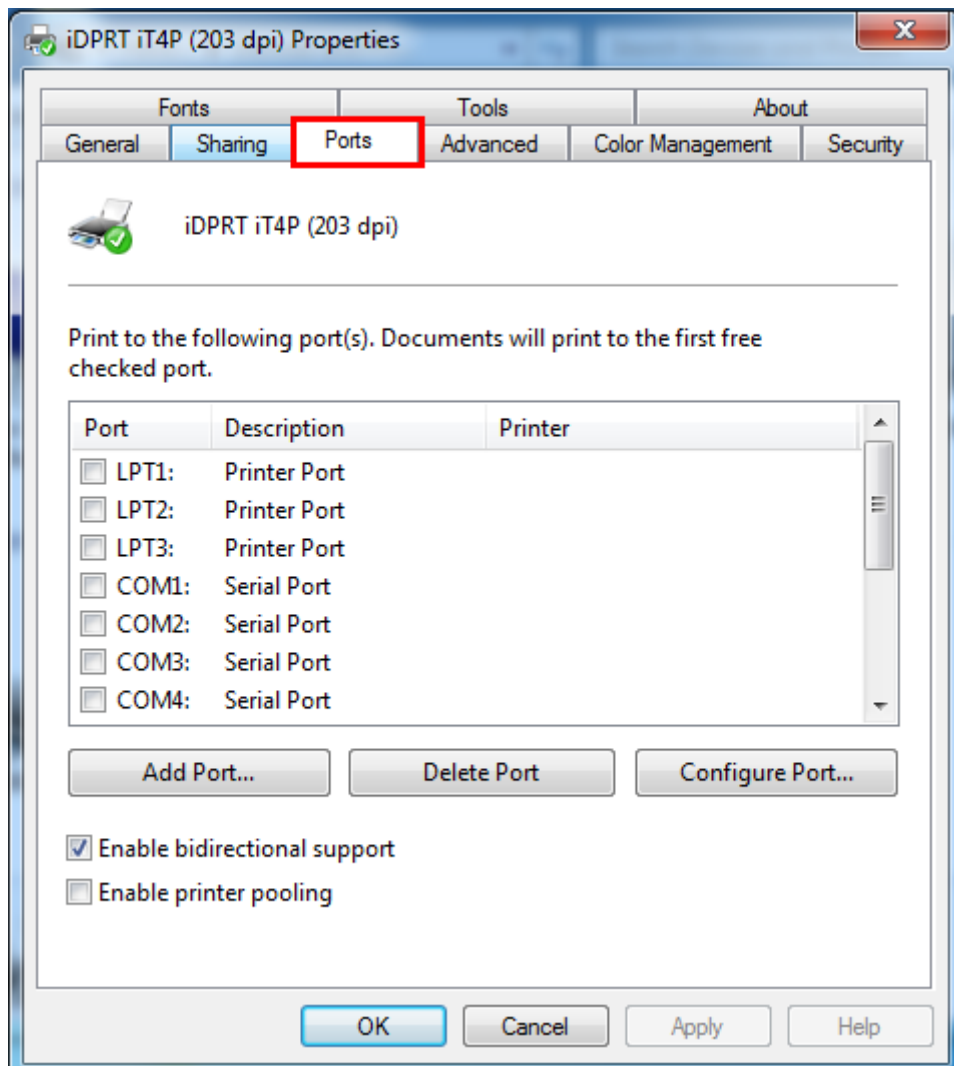


1.2 Driver Setting

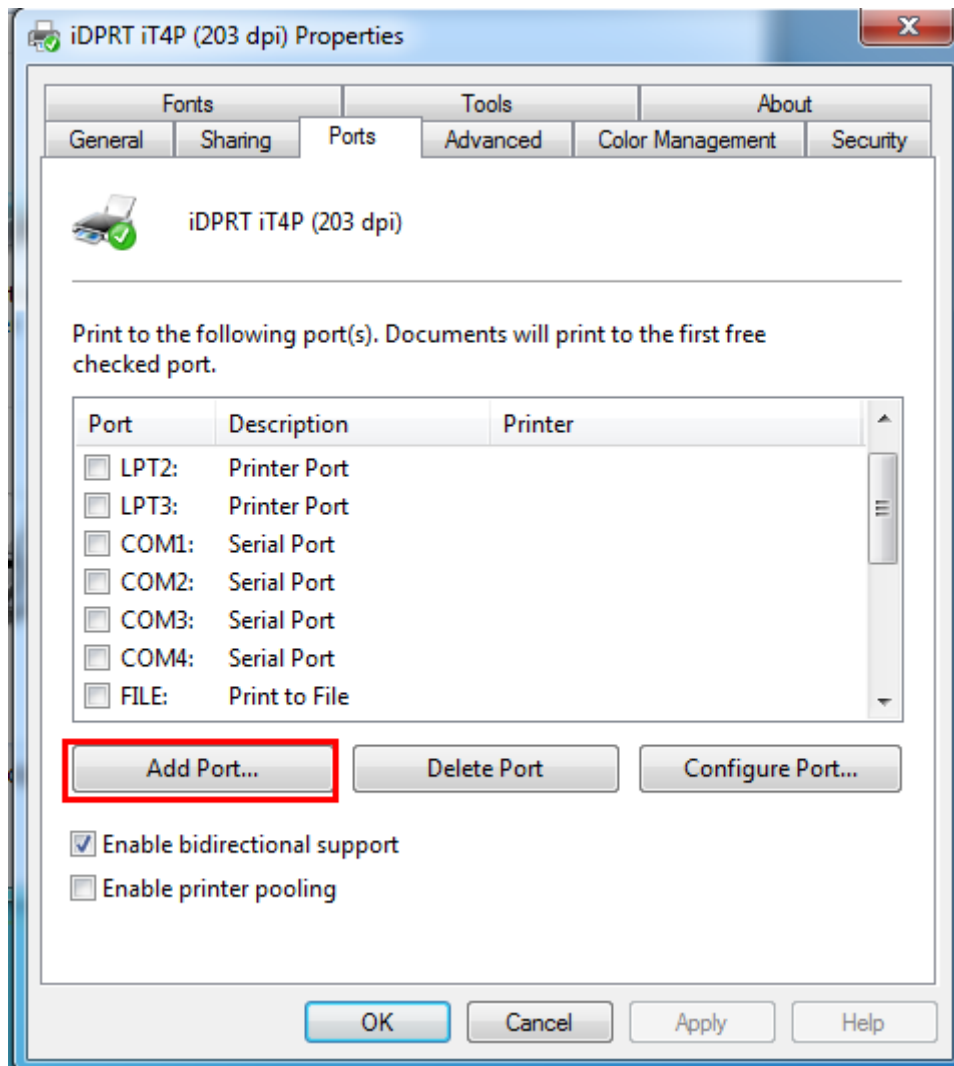
1) Click “Start” → “Devices and Printers”. Right click the icon and choose “Printing properties”.



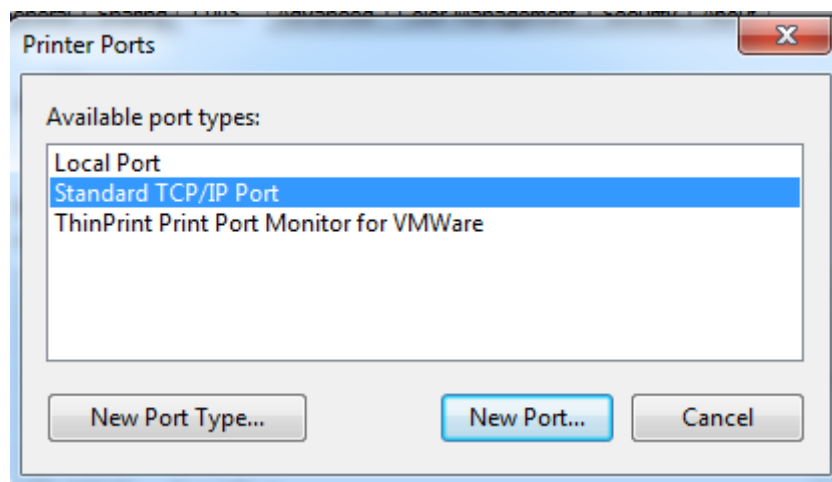
2) Click the “Ports”.



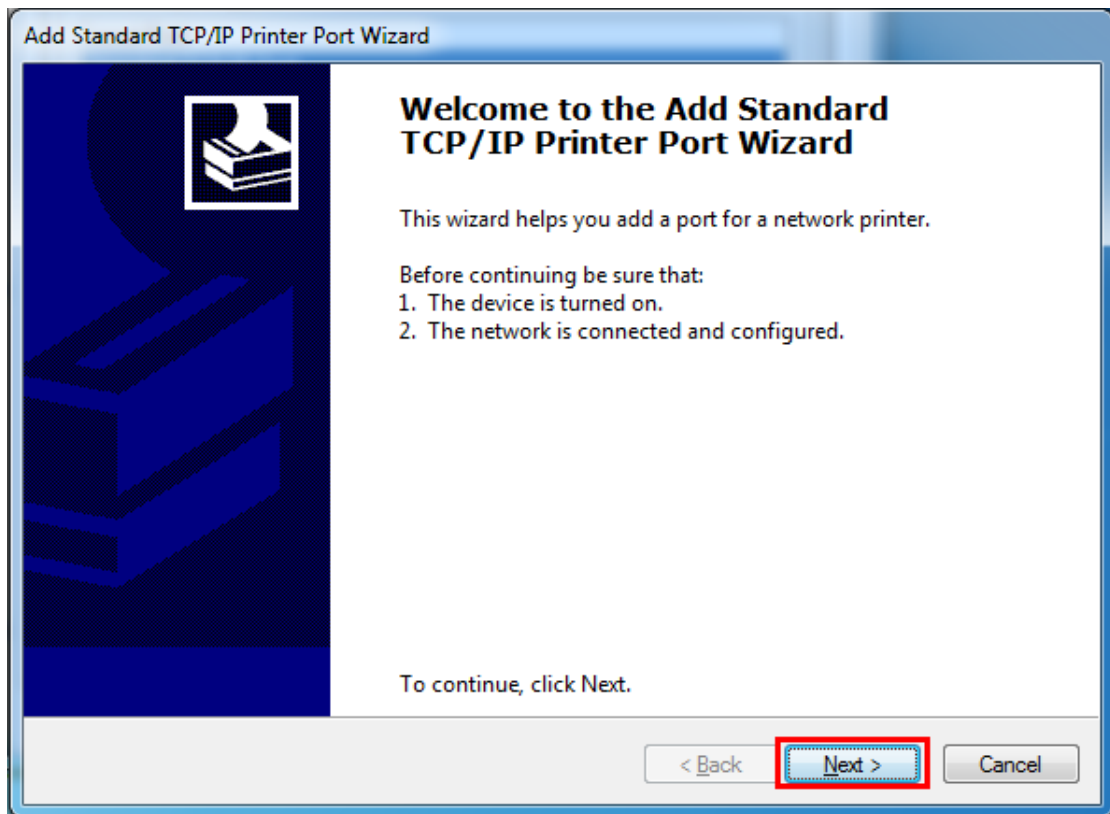
3) Click the “Add Port”.



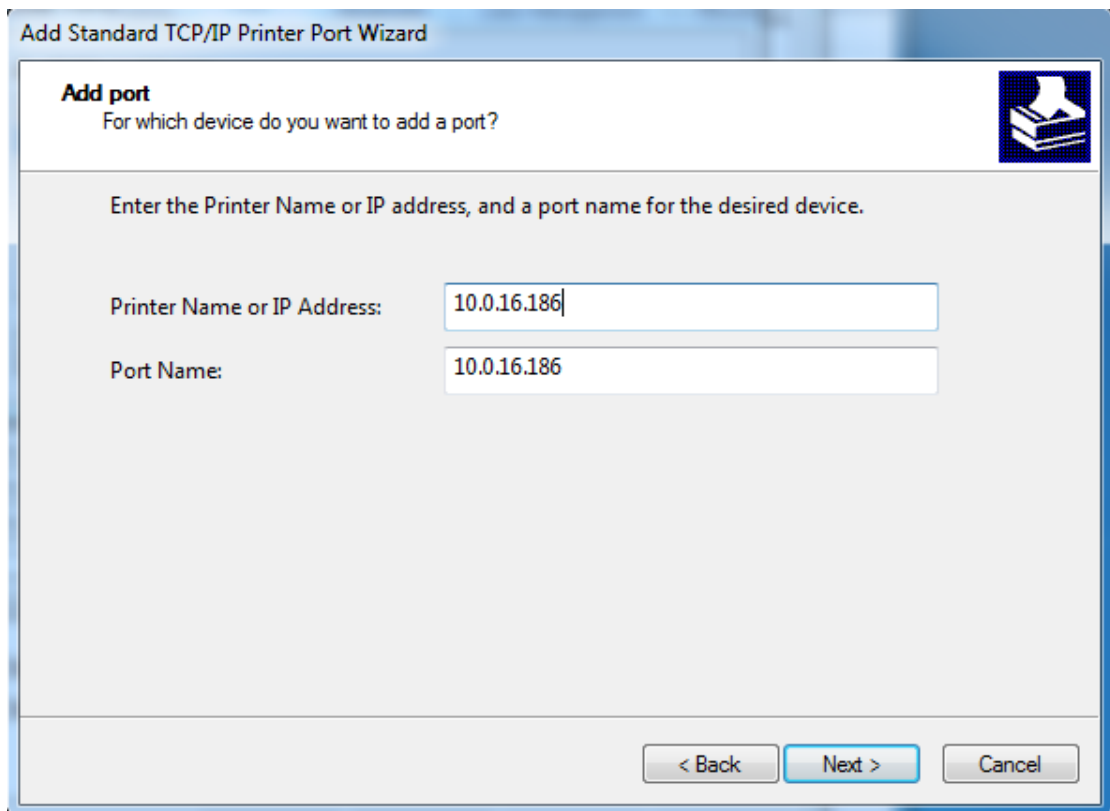
4) Choose the “Standard TCP/IP Port, then click the “New Port”.

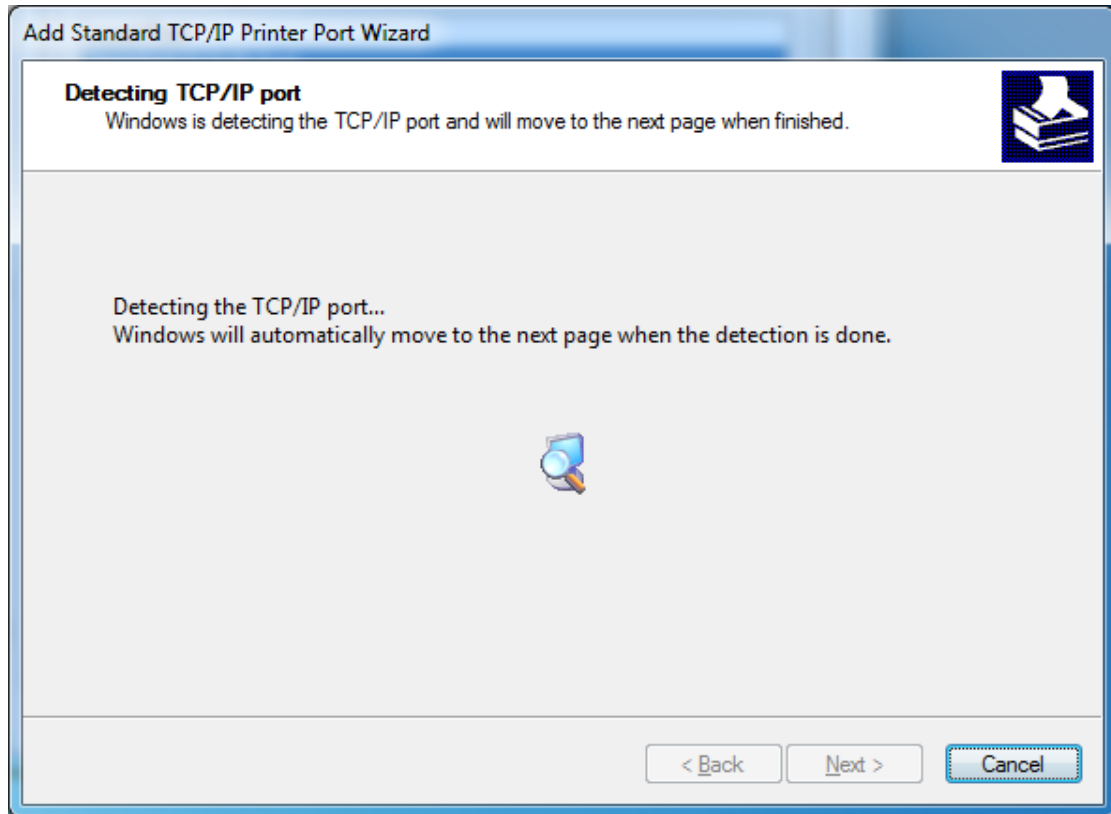


5) Click "Next".

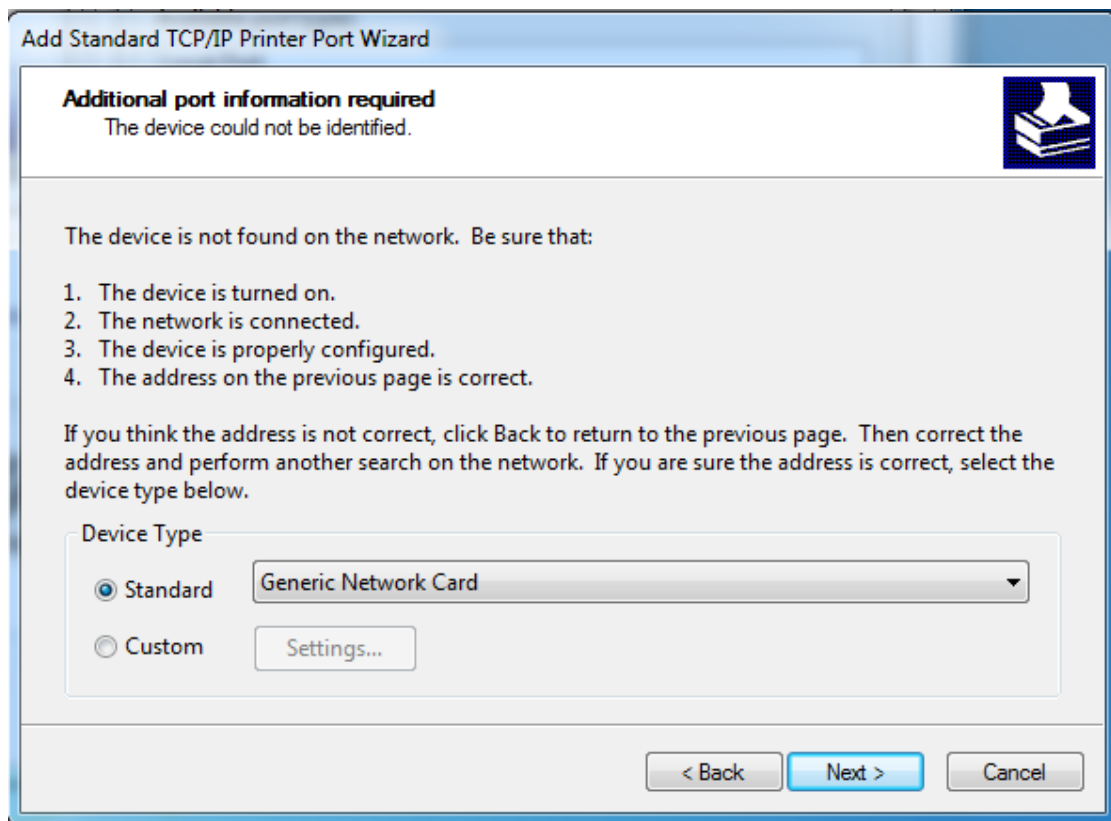


6) Enter the IP address. (E.g. 10.0.16.186)

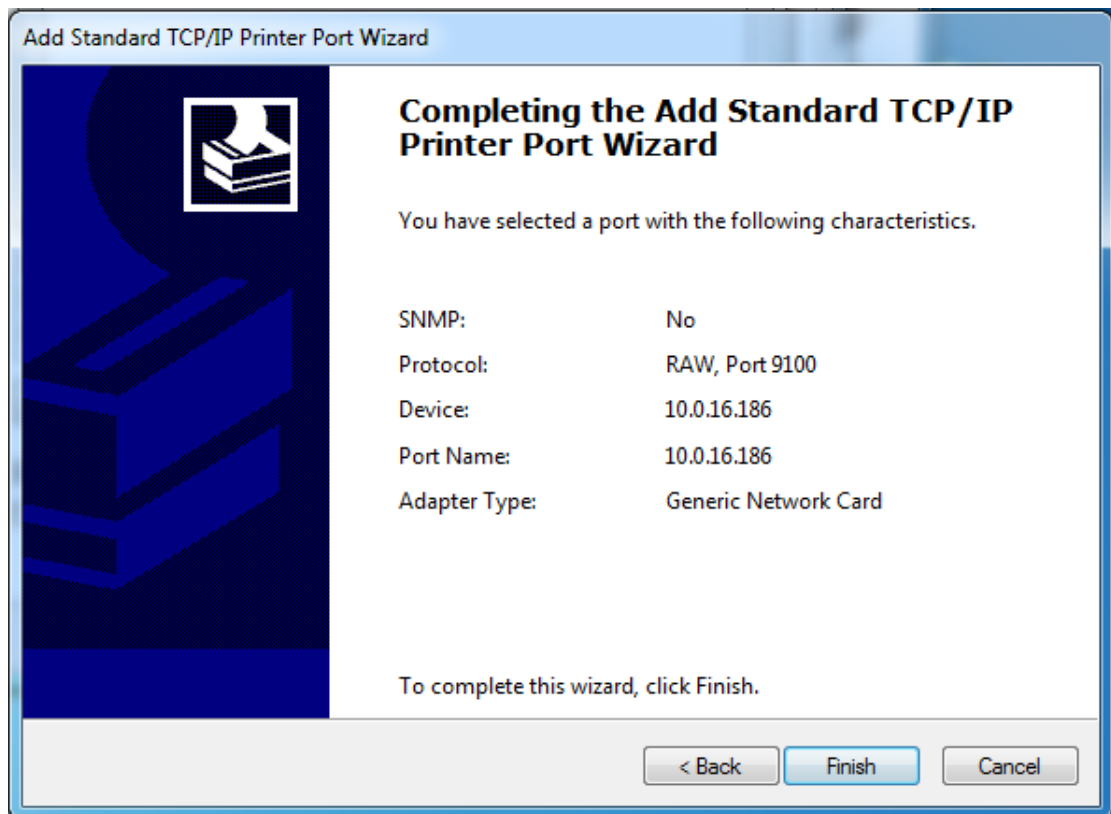




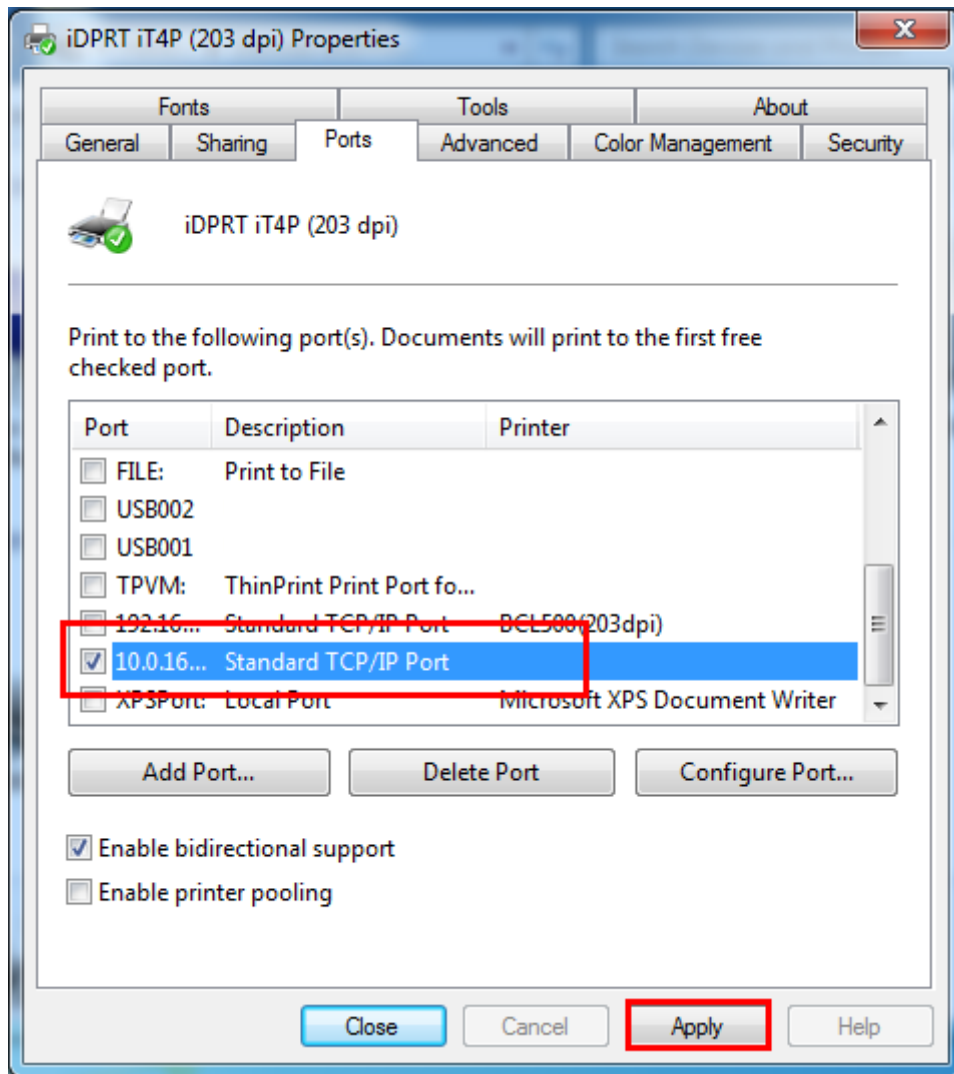
7) Click "Next".



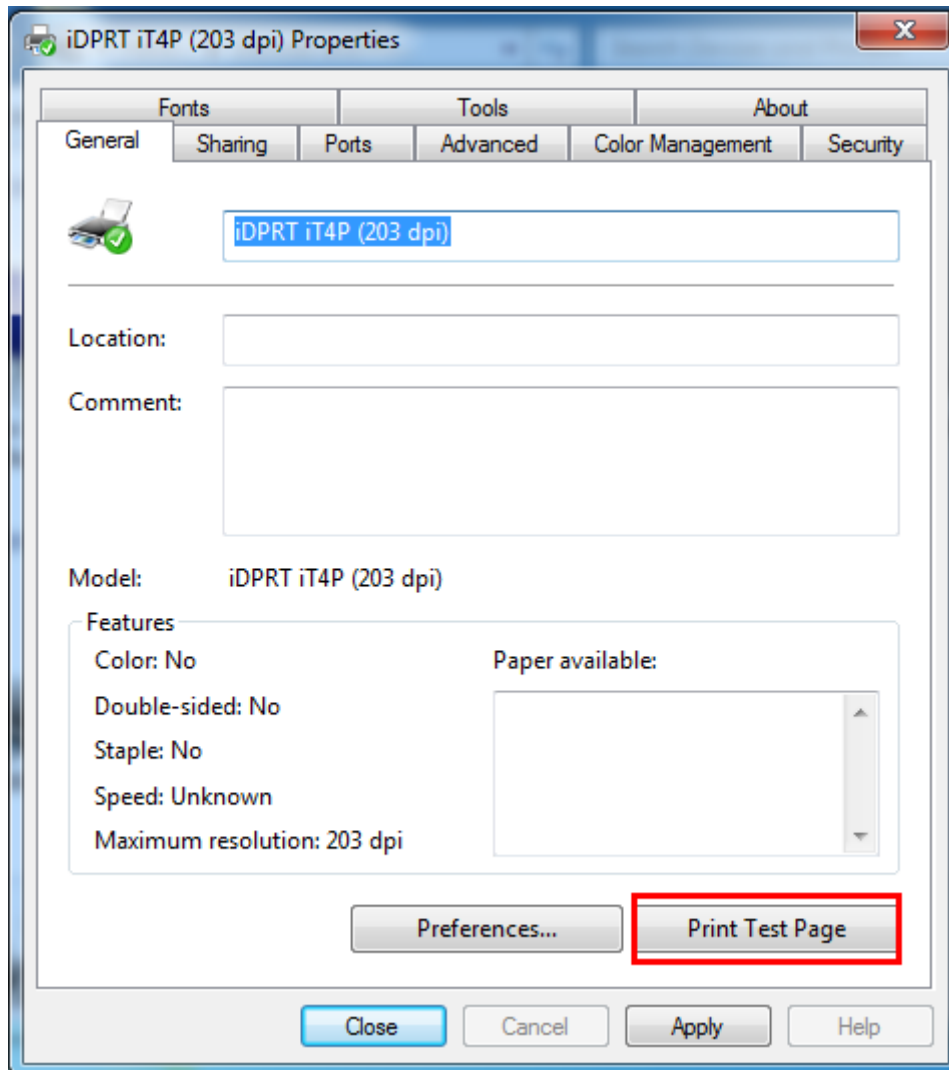
8) Click "Finish".



9) Return to "Port" page, choose the added port, and click "apply"



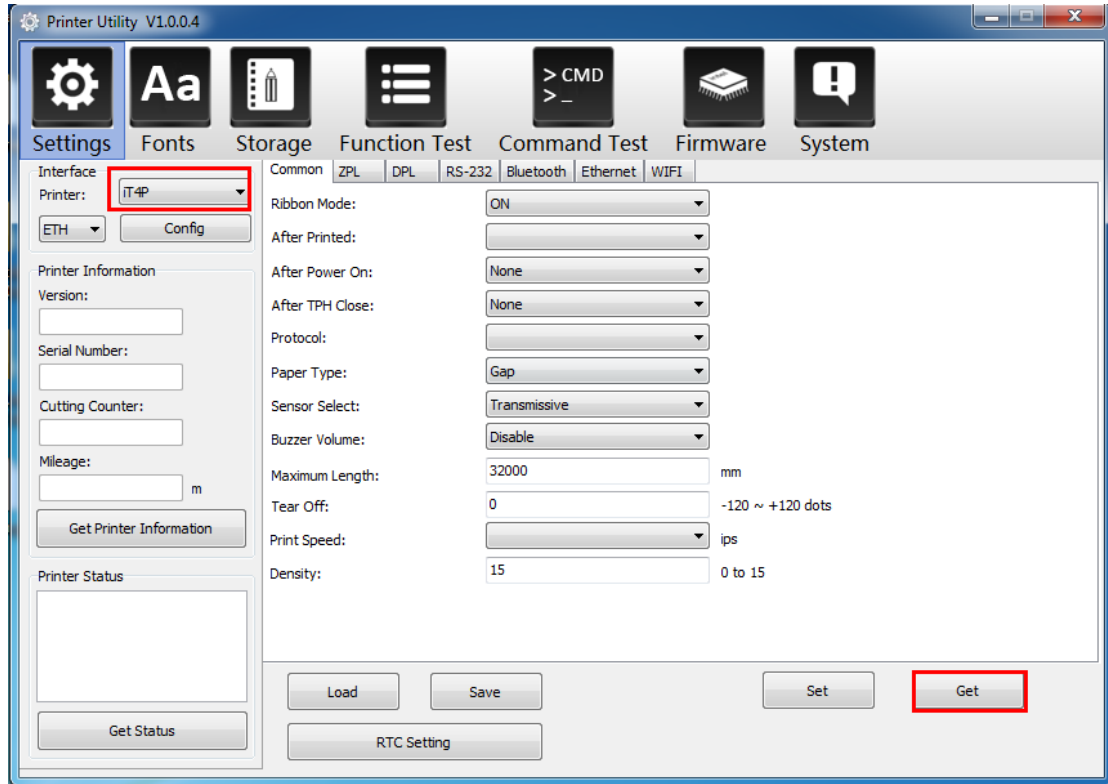
10) Click “General” → “Print Test Page” to check whether the label can be printed normal.



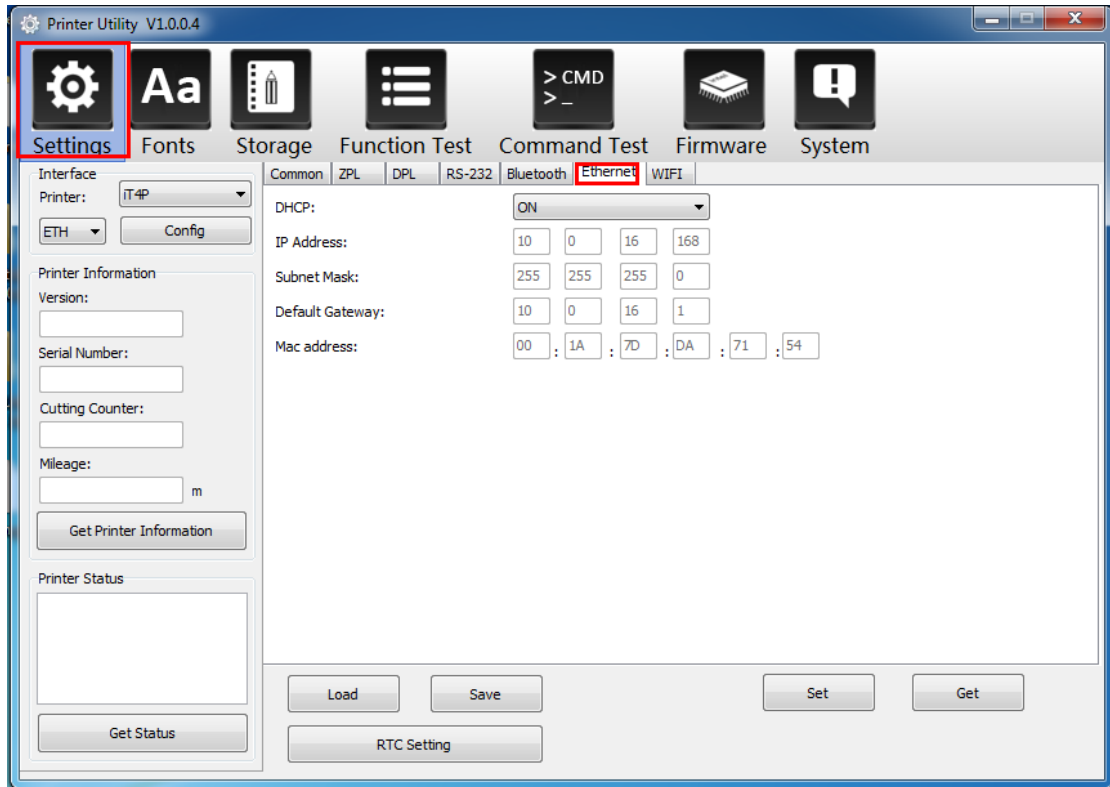
2. STA Mode Setting

2.1 Utility Setting

1) Click the utility, and click the “Get”.



2) Choose the “Ethernet”.

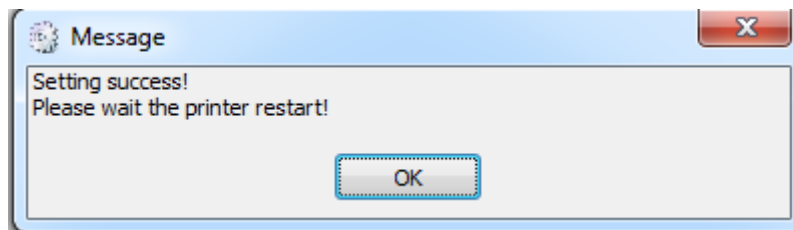
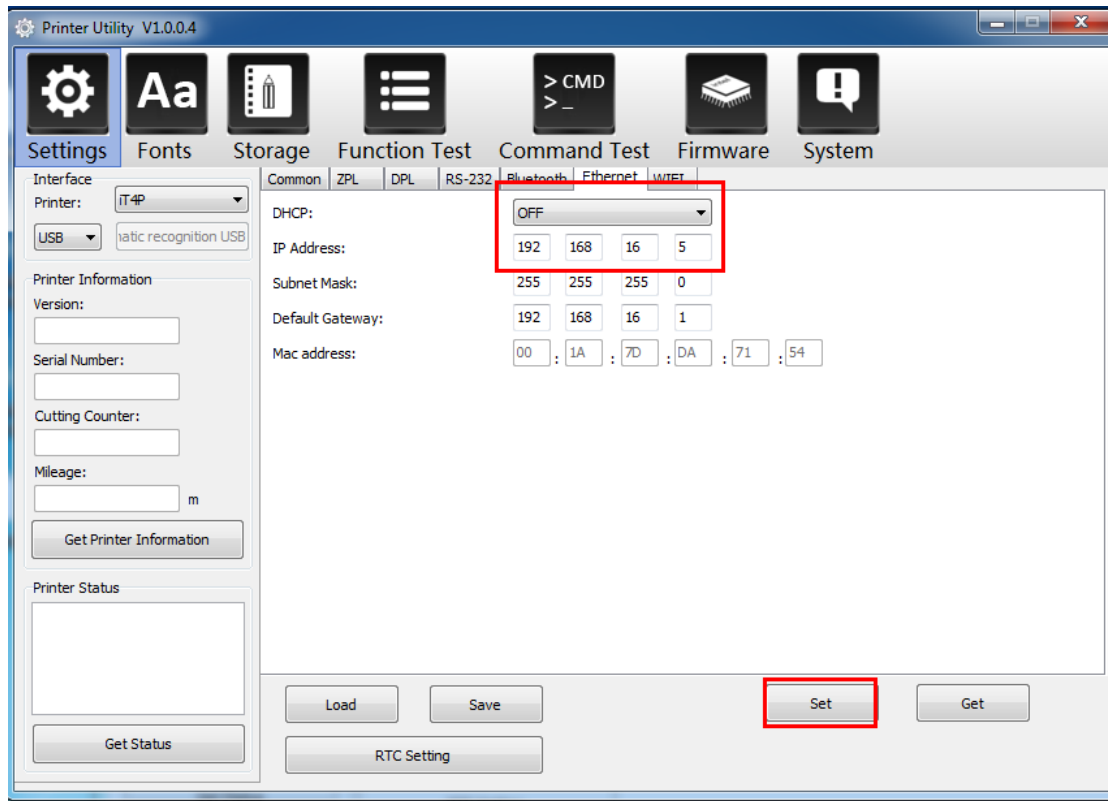


3) Setting the “DHCP” to “OFF”, then click “Set” and restart the printer.

Note: the new IP of printer and PC address must be in the same network segment.

Methods:

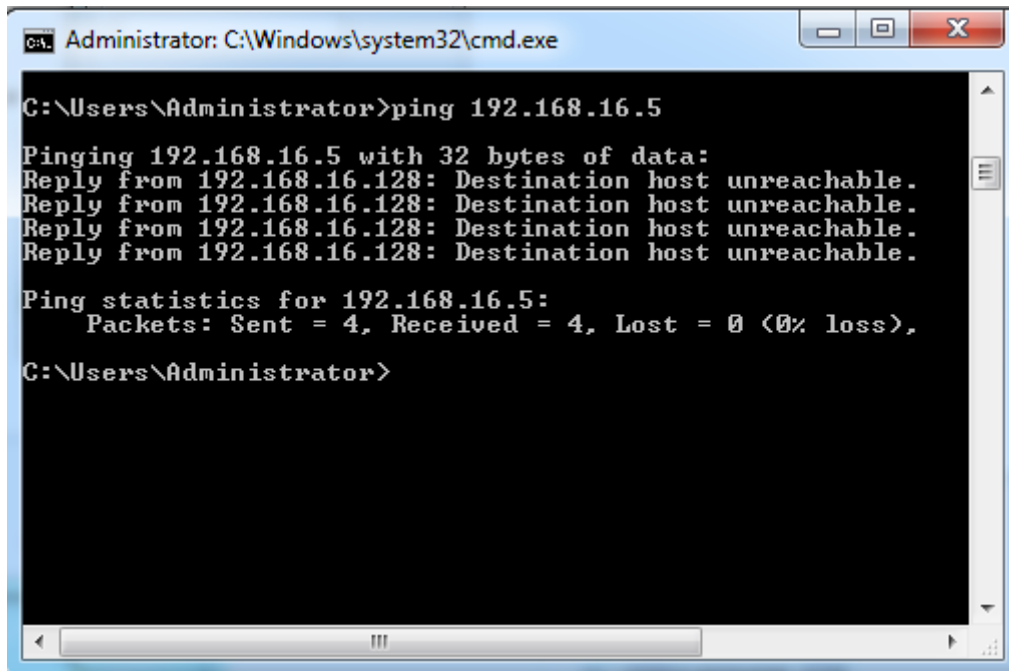
- ① Check the IP address of PC. (Such as: 192.168.16.128)
- ② Change the IP address of printer to 192.168.16.5. (In same network segment)



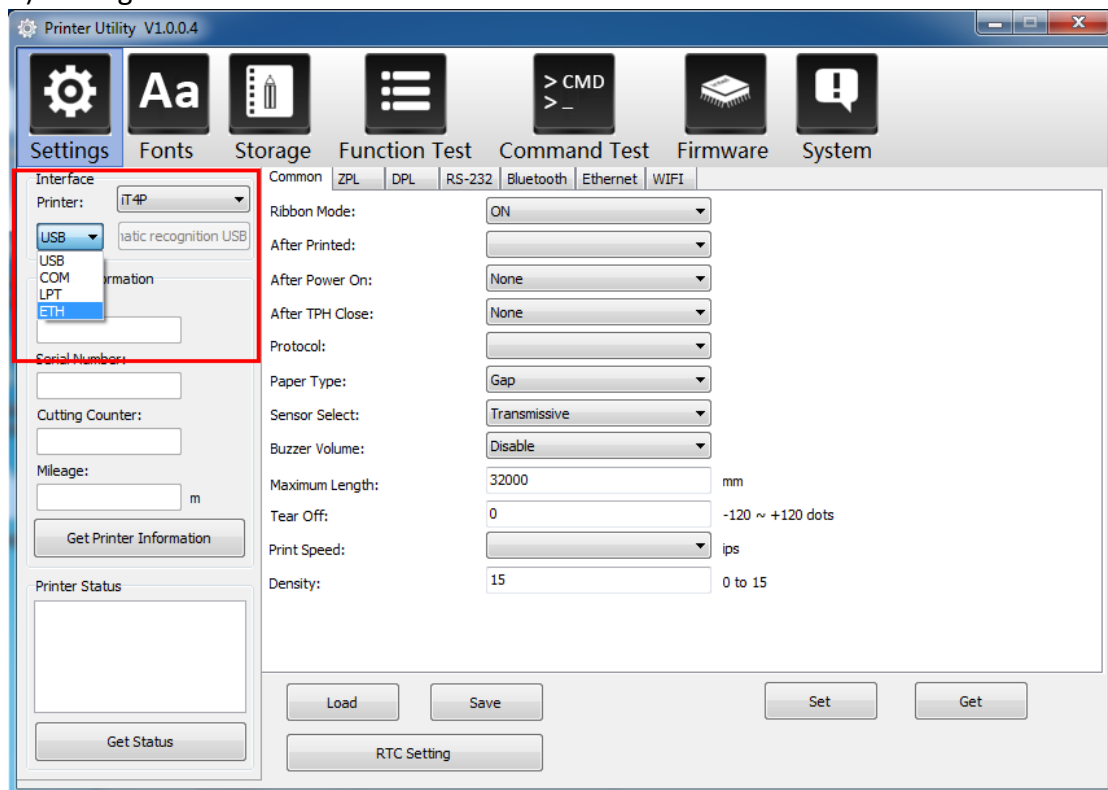
4) Check the IP address whether can be used normally.

■ Methods:

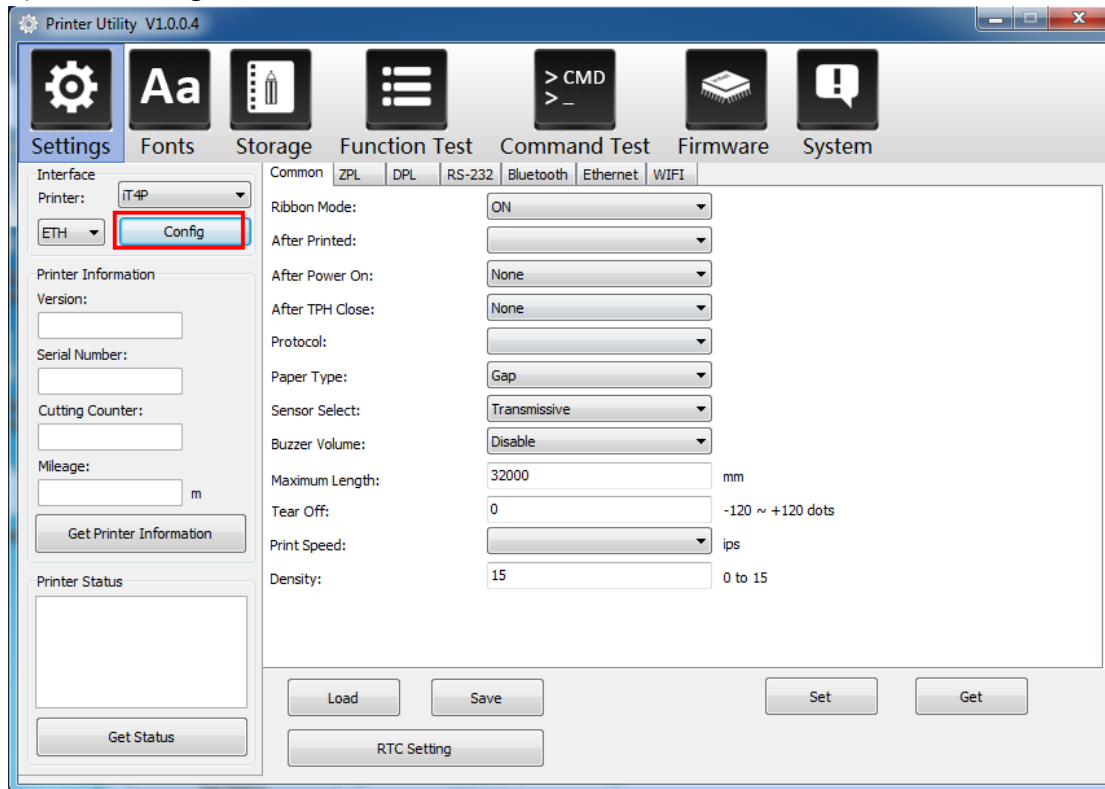
- ① Press WIN + R to open, then input “cmd” and enter.
- ② Input C:\User\Administrator>ping 192.168.16.5 (It’s the printer IP address after the ping)



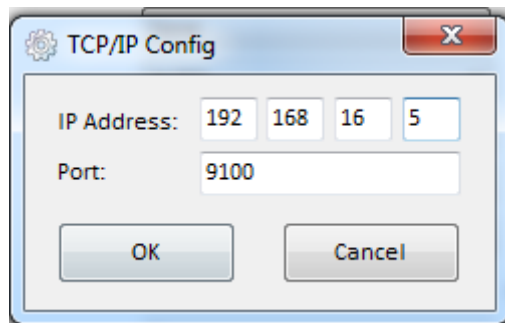
5) Setting the communication interface to “ETH”.



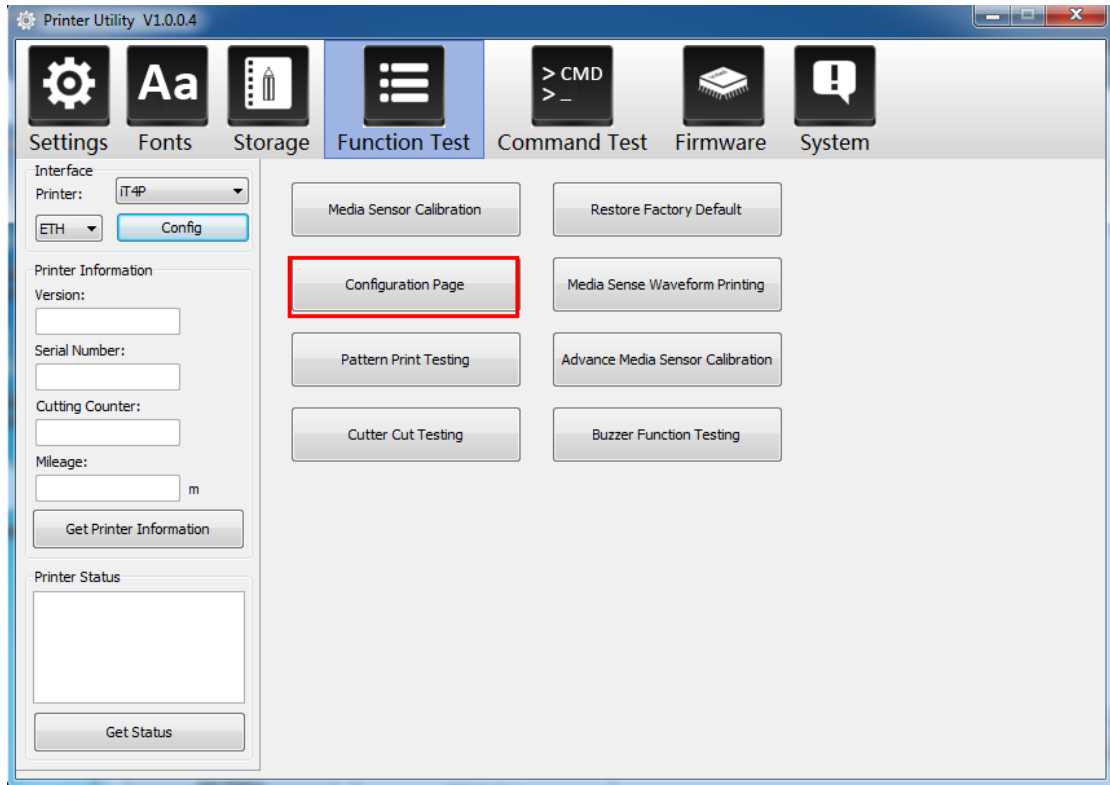
6) Click "Config".



7) Set the IP address as the IP address of the configuration page, and then click "OK".
(E.g. the IP address is 192.168.16.5)

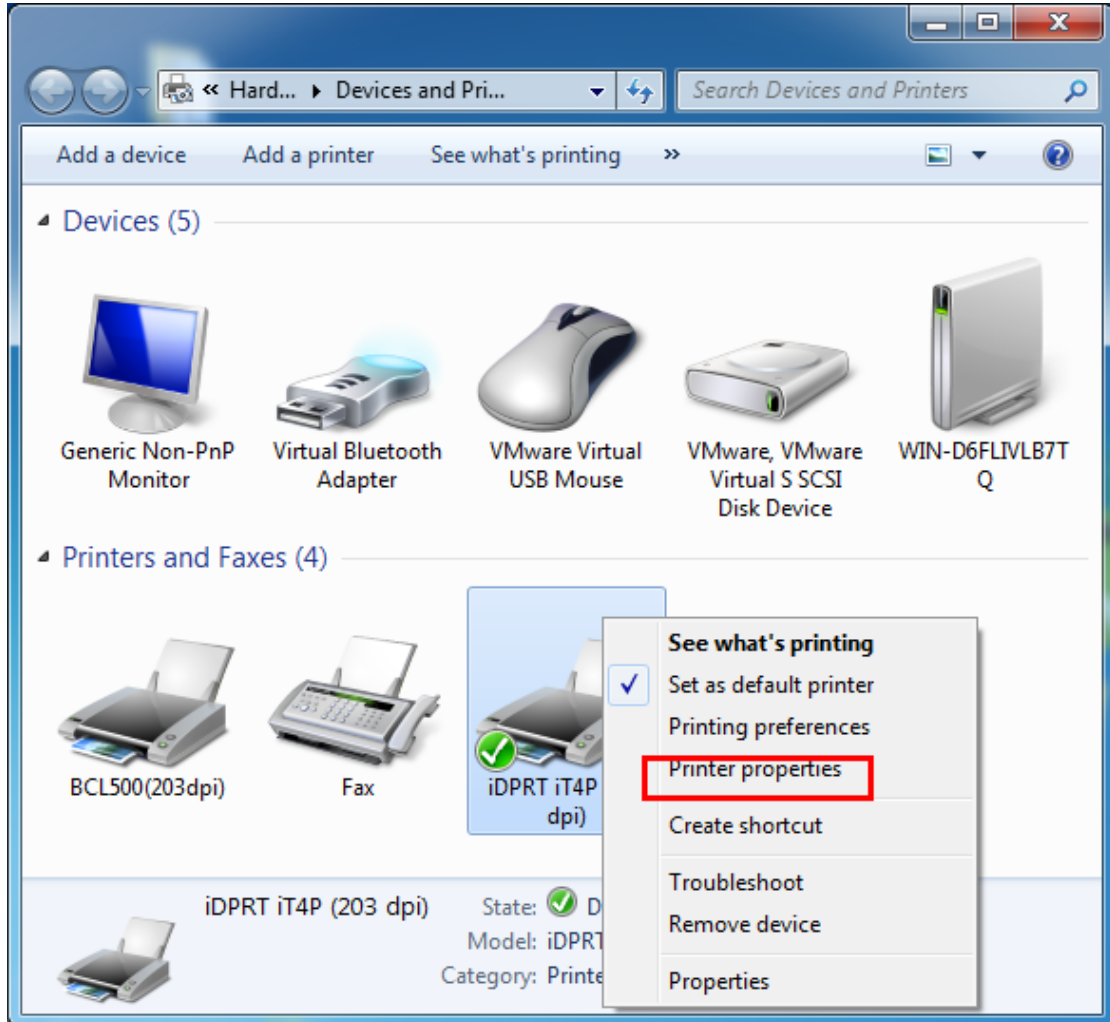


8) Select "Configuration Page" setting again to check whether label can be printed normally.

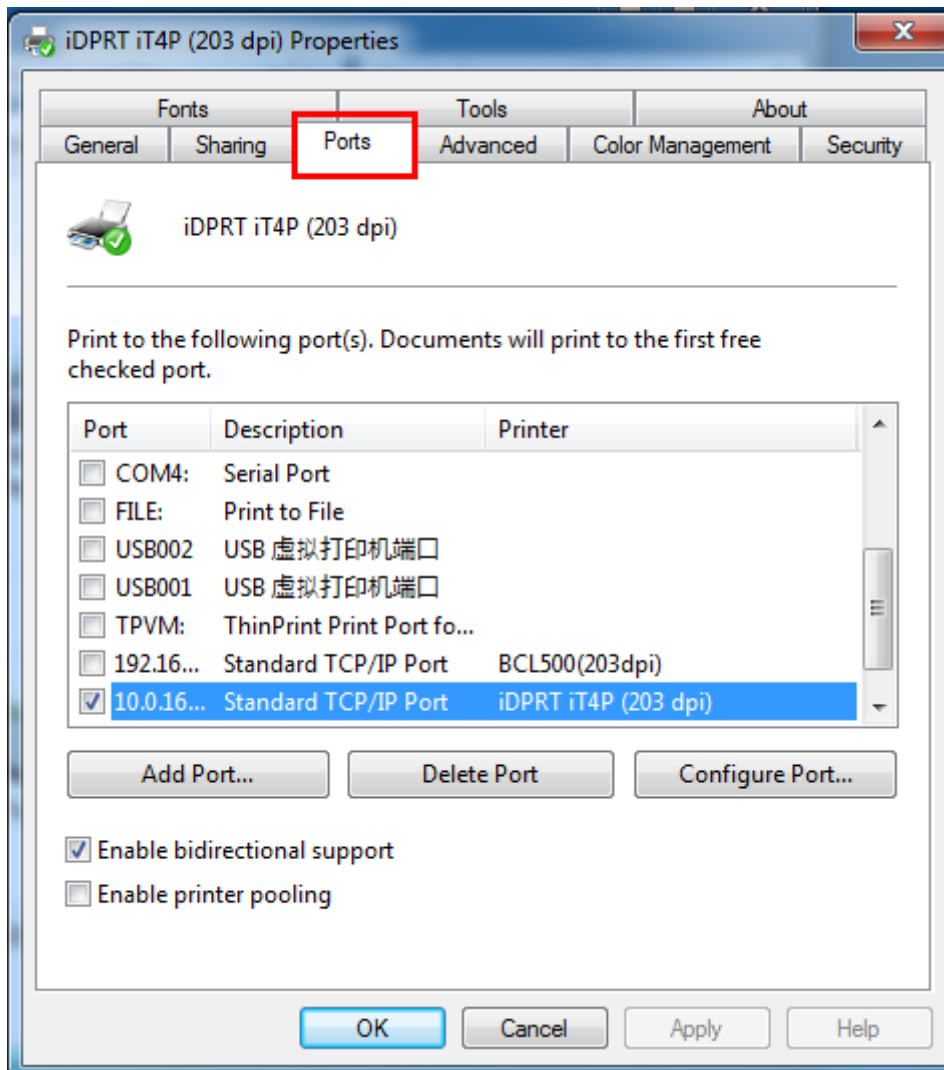


2.2 Driver Setting

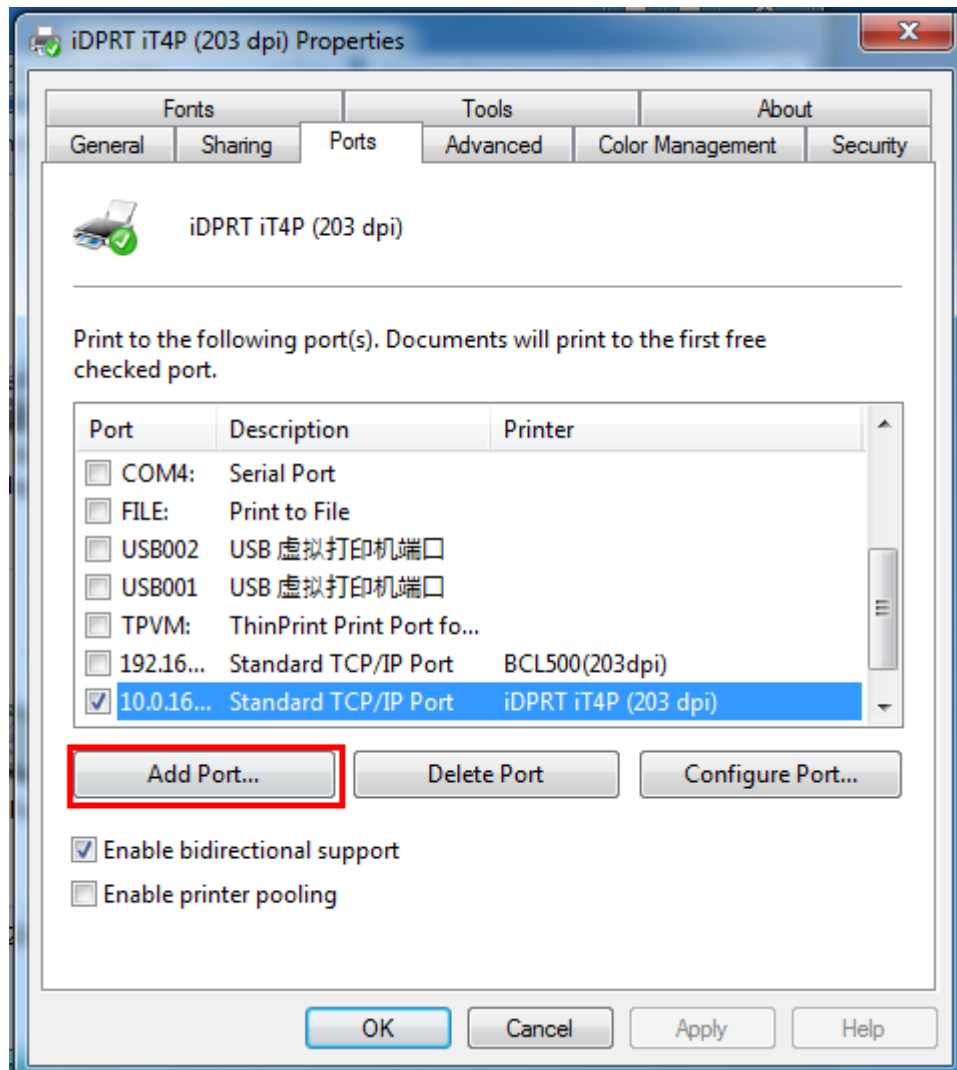
1) Click “Start” → “Devices and Printers”. Right click the icon and choose “Printing properties”.



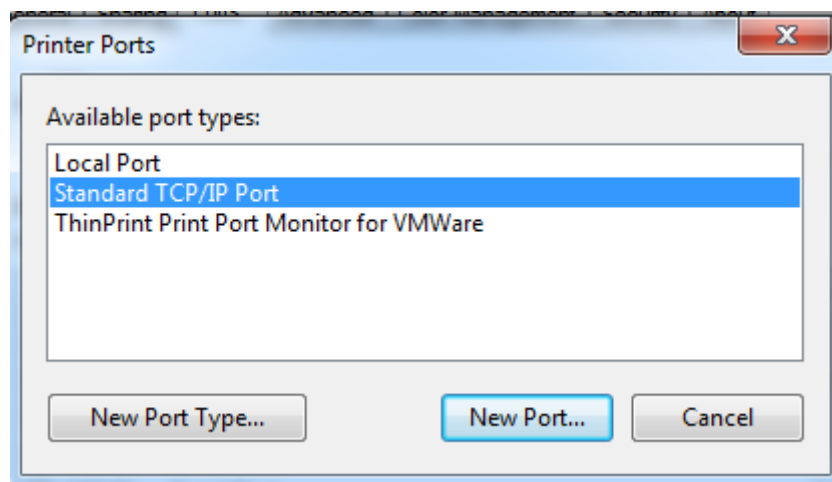
2) Click the “Ports”.



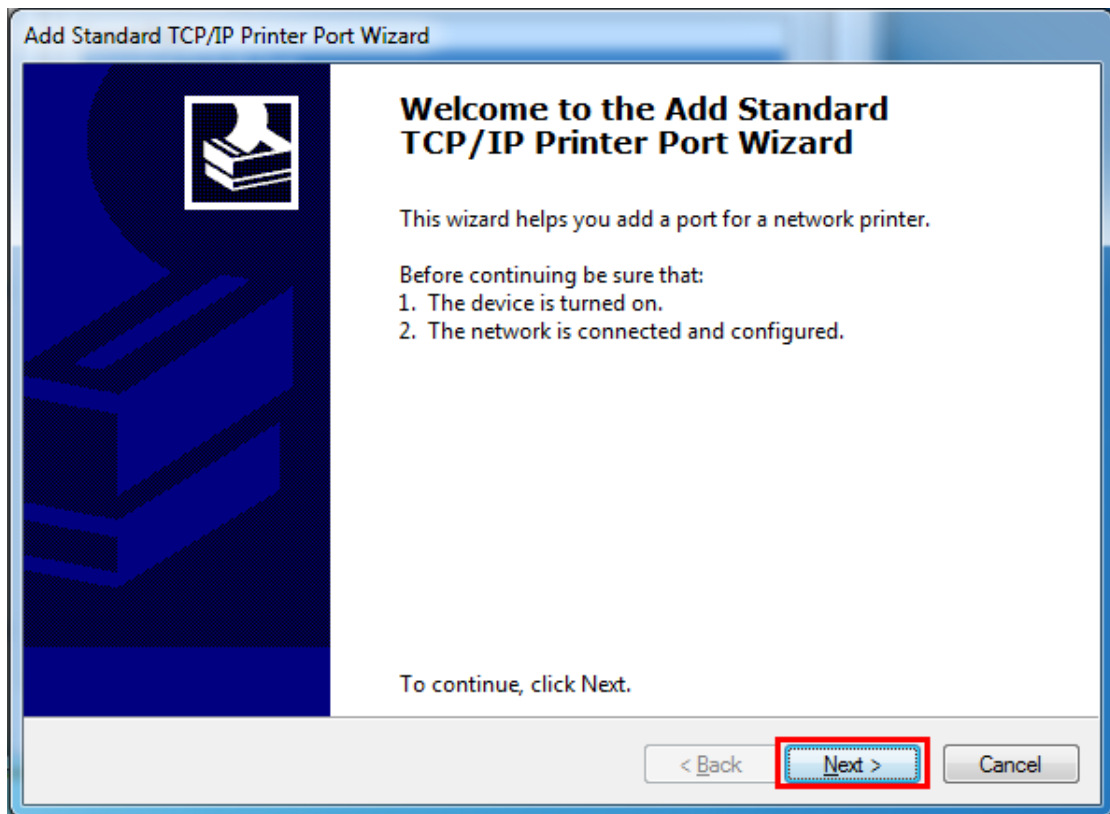
3) Click the “Add Port”.



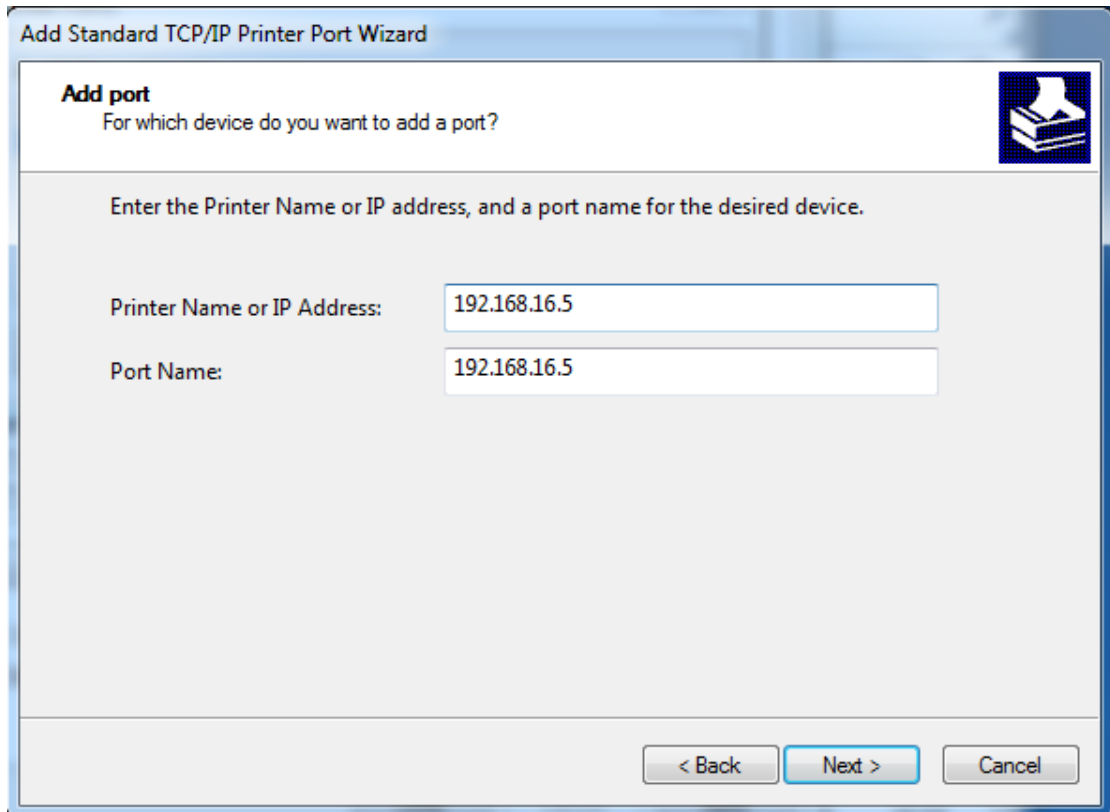
4) Choose the “Standard TCP/IP Port, then click the “New Port”.

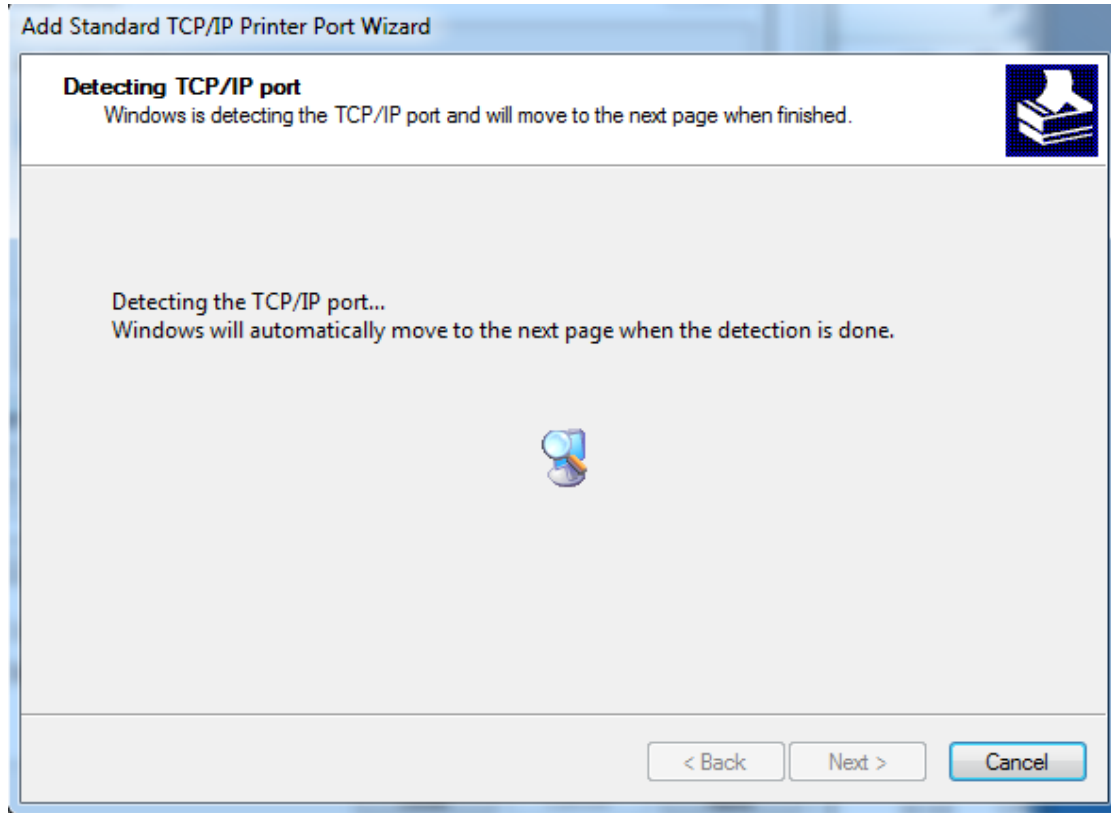


5) Click "Next".

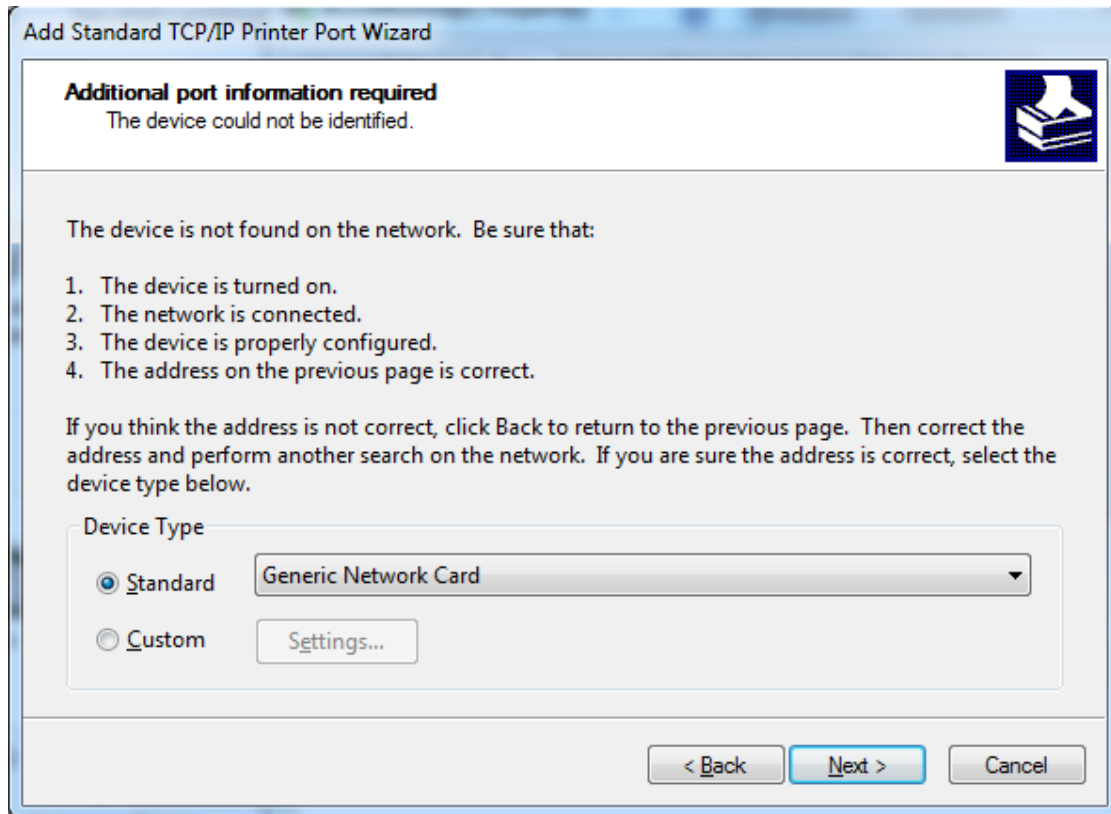


6) Enter the IP address (e.g. 192.168.16.5), click "Next".

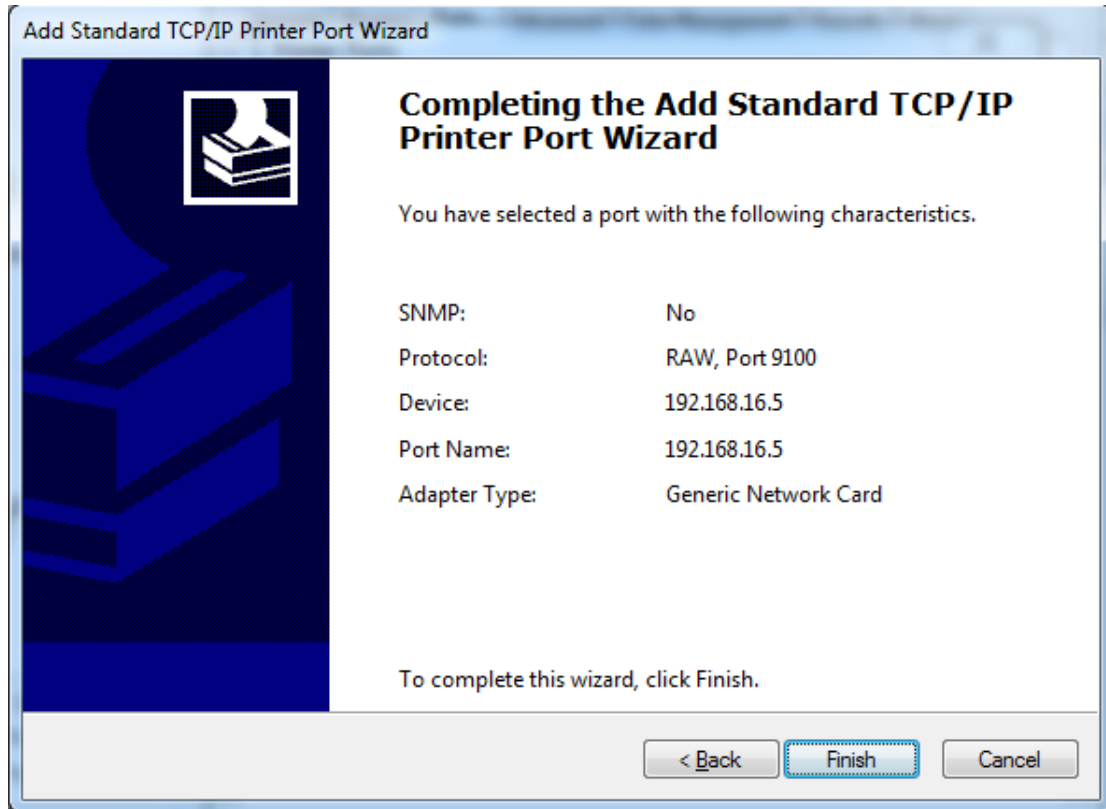




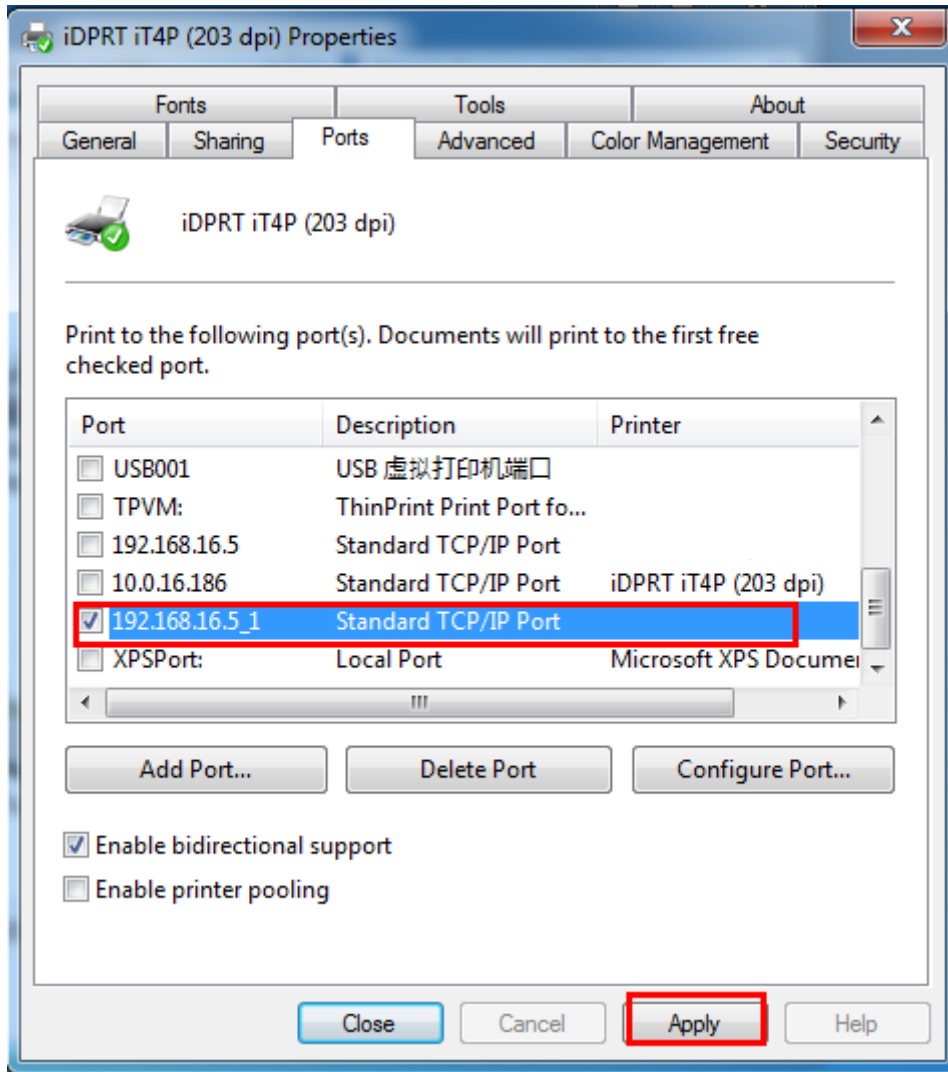
7) Click "Next".



8) Click "Finish".



9) Return to "Port" page, choose the added port, and click "apply"



10) Click “General” → “Print Test Page” to check whether the label can be printed normal.

